

“Immitator” ...cont’d from pg 4

work for the state health department, totally bored out of my mind inspecting restaurants. A terrible job and I wasn't very good at it," Fish said. He hated imposing regulations on eateries just scraping by in the poor county where he was assigned. "I'm not a very good cop. ... I used to coach them on how to get by - how to cheat." [6] Once a cheater, always a cheater, my grandfather used to tell me.

Edward McSweegan is not only not a medical doctor, he apparently never performed any lab work while either at the US Navy or the NIH. [7] Eugene Shapiro has an undergraduate degree in English Literature. Allen Steere went into Rheumatology specifically because he was told this would be a way to avoid the draft [8] and Vietnam. That is very cowardly, I believe.

Later, in 1992, two years after the ALDF.com was founded, Steere went to Europe apparently alone to falsify the diagnostic standard; leaving out OspA and B in anticipation of a post-LYMERix monopoly on blood products (human and bacterial viral) and the free venture capital known as NIH grants.

By accident we stumbled upon mechanisms of inhibition of the auto-kill kinase by some of these weird lipids (these seemed to behave like BLC2-class molecules or by some other means resulted in immortalized cells) and to our amazement, there it was all along. In 1989, reported that, essentially, "badly cloned B cells that looked like Epstein-Barr immortalized cells." [9] He was working for the Fox Institute Cancer Center at that time and later went on to win many awards for his service and discovery. Paul Duray worked for the US Army and the National Cancer Institute at Fort Detrick.

We know from Mario Philipp that OspA was a Pam3Cys structure, but nowhere could we find a structure of either it or in the HIV antigens gp41 and gp120. Antibodies against Pam3Cys in HIV victims- a curiosity, since creating antibodies against HIV seems to be the problem with vaccines.

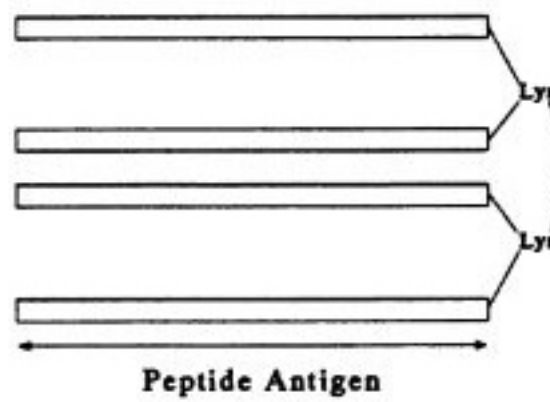
In 1988 we read [17]...

A novel immunoassay technique using synthetic lipopeptide (Pam3Cys-Ser) linked to immunodominant peptide domains of HIV-1 and HIV-2 envelope proteins as an antigen adsorbent has been developed. Attachment of peptides to microtiter plates can be considerably improved with this method by employing the hydrophobic properties of lipopeptide. From the sera of 121 HIV-1 infected patients 117 reacted with Pam3Cys-Ser-[HIV-1(598-609)cyclic disulfide]. Five of 5 HIV-2 positive sera were positive with Pam3Cys-Ser-[HIV-2(593-603)cyclic disulfide]. Control sera failed to react with these conjugates

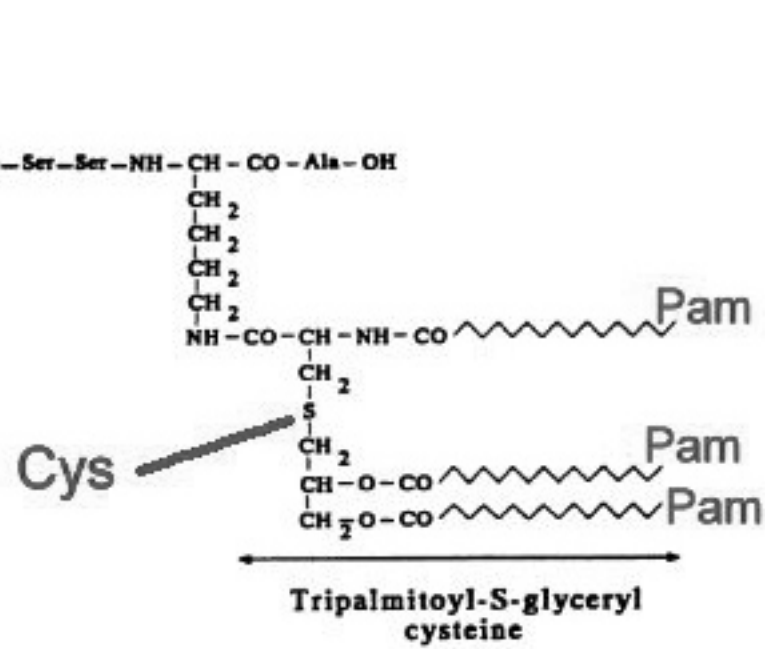
We also found that in 1992, Defoort created an HIV vaccine that has this structure:

<http://www.ncbi.nlm.nih.gov/pmc/articles/PMC525594/pdf/pnas01083-0219.pdf> [18]

Biochemistry: Defoort et al.



Proc. Natl. Acad. Sci. USA 89 (1992)



No one can show us what OspA looks like structurally. That is to say, there is not one chemical structure available online, anywhere, which includes the free, lipid-protein adjuvant, especially such that we would know what it looks like allegedly as a free molecule. Everyone knows that you can't crystallize a lipid (meaning any fat, oil, fatty acid, margarine, motor oil, hydrogenated-like grease, et.al) [10] John Dunn at Brookhaven - Department of Energy Report , "It's the perfect stealth bacteria," says one frustrated physician. He's talking about *Borrelia burgdorferi*, the bacterium that causes Lyme disease. This illness, which is often mistaken for diseases ranging from multiple sclerosis to Lupus, can inflict excruciating headaches and muscle pain, affect the brain and nervous system, attack major organs, and inflame joints." [11]

He goes on to say, "Understanding the structure is the key. The new understanding of the structure was made possible by the protein fixation and imaging techniques at NSLS. The NSLS permits researchers to focus and control light beams such that images can be seen at resolutions as fine as 2 a-near atomic resolution. It is no easy matter to concoct fragile organic matter, such as protein chains, into crystals that can withstand the powerful radiation bombardment of the NSLS and yet retain their original structure." [11]

The Brookhaven team who studied the structures of OspA and C only reported the non-lipid portion of these lipoproteins because you can't re-crystallize OspA in order to shoot it with X-rays. You can't freeze (crystallize) lipids. No one knows the real structure. Remember, structure is function and function is structure, they are one and the same. The only way we know the structure of OspA, as reported by Justin Radolf, was through its function (how it behaves immunologically).

According to NIAID Director, Anthony Fauci, regarding the recently failed-and-stopped HIV vaccine trial:

"Determining the structure of the trimeric form of the envelope protein is currently a research priority and is expected to yield additional insights." [19]

There was never a "key to vaccine failure" other than the known nature of the relapse in Relapsing Fever (antigenic variation or selection pressure,

or the fact that antibodies would never work as a vaccine, since they don't work to control Relapsing Fever) until we learned about immune suppression due to synthetic Pam3Cys or the OspA vaccines. Some of the best scientific sources that we recommend on the subject of Pam3Cys/OspA induced immunosuppression are Justin Radolf in 1990 extracted the lipids and was able to use heavy hydrogen labeled H(3) palmitate to determine that these lipids came on and off the spirochete intact, lending his group to believe the lipoproteins were Pam3Cys- 3 acyl groups.[12], Janis Weis, "Native OspA is active a concentrations lower than these synthetic lipopeptides...unique modifications by the spirochete." She is saying that Bb may be taking up the palmitic acid groups intact, but somehow the spirochete arranges the lipids so that they're more toxic when the bug produces them. [13]

Other notable scientists Schröder and Schumann reported, "Lipoproteins and lipopeptides have repeatedly been shown to act as potent cytokine inducers, interacting with TLR-2, in synergy with TLR-1 or -6." [14], Wiesmüller, is talking about how he added the fatty acid groups ("lipo") to the amino acids ("protein"). In the end he says he used 13C-NMR (radiolabeled carbon) and mass spectrometry to see if it all went on right... and then he separated out the components that added on wrong with HPLC (silica gell) or a SEPARATION METHOD [15]. All the scientists were cross-referencing each others work. The Duke Biochemistry Department, say the "LIPO - POLY - SACCHARIDES" are components of the cell membranes and are known as endotoxins. Remember that lipids from bacteria are a problem for humans. They're immunogenic. They tell the body that there is an invader. [16].

We also noted there are jobs out there for Lipid Biochemists. This is a hot field now; scientists around the world have found out that Yale falsified their LYMERix vaccine outcomes. OspA did not prevent Lyme. It caused Chronic Pam3Cys or OspA-Immune-Suppression Syndrome, and the New Great Imitators. In 1994 Justin Radolf reported:

"A structural feature common to *T. pallidum* and *B. burgdorferi* is that the majority of their integral membrane proteins are lipid modified (9, 12,

and 42). Compelling data have now emerged supporting that these spirochetal lipoproteins are potent immunopotentiators. Treponemal and borrelial lipoproteins have been shown to activate monocytes/macrophages, B cells, and endothelial cells in vitro (1, 28, 29, 36, 39, 49, 56), suggesting that these molecules are inflammatory mediators in both syphilis and Lyme disease. More recently, we reported that synthetic lipohexapeptide analogs (lipopeptides) corresponding to the N termini of the native spirochetal lipoproteins could be used as lipoprotein surrogates in immune cell activation studies (16, 37).

These lipopeptides, modeled after earlier studies of Bessler, Jung, and coworkers on the murein (Braun's) lipoprotein of *Escherichia coli* (21, 22), have been configured as N-palmitoyl-S-dipalmitoyl-glycerylcysteine-pentapeptides (16, 37) revealing that OspA was Pam3Cys and synthetic, and that OspA without the lipids attached - the way Allen Steere came up with the current, scientifically fraudulent CDC diagnostic standard missing OspA and B in Europe - would be how "not to create antibodies" or an immune response. [20]

Allen Steere reported in 1992, when he went to Europe [21]:

"Supernatants from sonicated lysates of whole spirochetes were prepared as described (20). The group 1 strain of *B. burgdorferi*, G39/40, used in this study and in the previous study of US patients was isolated from an *Ixodes damini* tick in Guilford, Connecticut 921). The group 2 strain, FRG [Federal Republic of Germany], was isolated from *Ixodes ricinus* near Cologne (21). The group 3 strain, IP3, was isolated from *Ixodes persulcatus* near Leningrad (23). All three strains used in this study were high passage isolates, which were classified by Richard Marconi (Rocky Mountain Laboratory, Hamilton, MT) using 16S ribosomal RNA sequence determination as described (11, 24). The recombinant preparations of OspA and OspB used in this study were purified maltose-binding protein-Osp fusion proteins derived from group 1 strain B31 (25). The fusion proteins contained the full-length OspA or OspB sequence - without the lipid moiety or the signal sequence."

This is the CDC standard we have in place today

[22]. "It was recommended that an IgM immunoblot be considered positive if two of the following three bands are present: 24 kDa (OspC) \*, 39 kDa (BmpA), and 41 kDa (Fla) (1). It was further recommended that an that IgG immunoblot be considered positive if five of the following 10 bands are present: 18 kDa, 21 kDa (OspC) \*, 28 kDa, 30 kDa, 39 kDa (BmpA), 41 kDa (Fla), 45 kDa, 58 kDa (not GroEL), 66 kDa, and 93 kDa (2)."

As you can see in the above paragraph, there is No OspA or B in the diagnostic standard that is in place today. This is why hardly anyone tests CDC positive, and we are all staying so sick.

I do realize this is an abundance of data for regular people, like you and me. The information presented is very hard to understand, but if you really think about what each doctor did and then read their reports, it will become abundantly clear why they committed scientific fraud.

I find myself so compelled to study the mechanisms that once tried to take my life. Now, it sits exposed for all to see as if the emperor was naked all along. The "true science" behind Lyme disease now is there for the taking. Please use the information to empower yourself...empower others.

Coming up next in Part 3- Interview with a notable scientist!

If you have any questions regarding the data presented please email: [freethinkerx@live.com](mailto:freethinkerx@live.com)

References:

- [1] Giambartolomei GH, Dennis VA, Lasater BL, Philipp MT., "Induction of pro- and anti-inflammatory cytokines by *Borrelia burgdorferi* lipoproteins in monocytes is mediated by CD14" PMID: 9864208 [PubMed - indexed for MEDLINE]
- [2] Graham A. W. Rook, Keertan Dheda & Alimuddin Zumla, "Immune responses to tuberculosis in developing countries: implications for new vaccines", *Nature Reviews Immunology* 5, 661-667 (August 2005) | doi:10.1038/nri1666
- [3] Stefan H. E. Kaufmann, "Envisioning future strategies for vaccination against tuberculosis", *Nature Reviews*

# NATIONAL SUPPORT GROUPS

## National Multiple Sclerosis Association:

[www.nmss.org](http://www.nmss.org)

### Alabama

3840 Ridgeway Drive  
Birmingham, AL 35209  
Phone: (205) 879-8881  
Phone: 1-800-FIGHT-MS  
Email: [alc@nmss.org](mailto:alc@nmss.org)  
[www.nationalmssociety.org/alc](http://www.nationalmssociety.org/alc)

### Northern California

150 Grand, Oakland, CA 94612  
Phone: 510-268-0572  
toll-free: 1-800-FIGHT MS  
Email: [info@msconnection.org](mailto:info@msconnection.org)  
<http://www.msconnection.org>

### Colorado

700 Broadway, Suite 808  
Denver, CO 80203-3442  
Phone: 303.831.0700  
1.800.FIGHT.MS

### Georgia

455 Abernathy Rd. NE, Suite 210  
Atlanta, GA 30328  
Phone: 404-256-9700  
Phone: 1-800-FIGHT-MS  
[mailbox@nmssga.org](mailto:mailbox@nmssga.org)

### Florida

2701 Maitland Center Pkwy, Suite 100  
Maitland, FL 32751  
Phone: (407) 478-8880  
Email: [info@flc.nmss.org](mailto:info@flc.nmss.org)  
[www.nationalmssociety.org/flc](http://www.nationalmssociety.org/flc)

### Texas

8111 N. Stadium Drive, Suite 100  
Houston, TX 77054  
Phone: 713-526-8967

## ALS Association DC / MD / VA

<http://www.alsinfo.org/>  
7507 Standish Place  
Rockville, MD 20855  
(301) 978-9855  
toll free: (866) 348-3257  
fax: (301) 978-9854

### Great Philadelphia ALS Chapter

321 Norristown Road, Suite 260  
Ambler, PA 19002  
Phone: 215-643-5434  
Toll Free: 1-877-GEHRIG-1 (1-877-434-7441)  
Fax: 215-643-9307  
[alsassoc@alsphiladelphia.org](mailto:alsassoc@alsphiladelphia.org)

### South Texas Chapter

<http://www.alsa-south-tx.org/>  
(210) 733-5204  
toll free at (877) 257-4673

### North Texas

<http://walk.alsanorthtexas.org/site/PageServer>  
1231 Greenway Dr., Ste.385  
Irving, TX 75038

[s.melson@alsanorthtexas.org](mailto:s.melson@alsanorthtexas.org)  
972-714-0088  
877-714-0088

### Lyme Disease Support Arizona

**Southern Arizona - Donna**  
Hoch: [nanandbo@cox.net](mailto:nanandbo@cox.net)  
520-393-1452

### L.E.A.P. Arizona

Tina J. Garcia  
Lyme Education Awareness  
<http://www.leaparizona.com>  
480-219-6869 Phone

## Lyme Disease Support

### Arkansas

Mary Alice Beer  
(501) 884-3502  
[abeer@artelco.com](mailto:abeer@artelco.com)

### California

Dorothy Leland  
website: [www.lymedisease.org](http://www.lymedisease.org)  
contact@lymedisease.org  
**Mid-Peninsula Lyme Disease Support Group**  
Mountain View, CA  
2nd Tuesday each month:  
6:30-8:30 PM  
[ldsg\\_scott@hotmail.com](mailto:ldsg_scott@hotmail.com)

### Colorado

Mary Parker  
303-447-1602  
[milehightick@yahoo.com](mailto:milehightick@yahoo.com)

### Connecticut

[www.timeforlyme.org](http://www.timeforlyme.org)  
914-738-2358

Meetings: first Thursday of every month from 7-8:30 p.m. at the Greenwich Town Hall

### National Support:

[truthaboutlymedisease.com/](http://truthaboutlymedisease.com/)  
Dana Floyd, director  
**LDA of Iowa**  
PO Box 86, Story City, IA  
515-432-3628  
[ticktalk2@mchsi.com](mailto:ticktalk2@mchsi.com)

### Kansas

913-438-LYME  
[Lymefight@aol.com](mailto:Lymefight@aol.com)

### Montana

[bepickthorn@earthlink.com](mailto:bepickthorn@earthlink.com)

### North Carolina

Stephanie Tyndall  
[sdtyndall@yahoo.com](mailto:sdtyndall@yahoo.com)

### South Carolina

Contact Kathleen at (864) 704-2522  
[greenvillelyme@bellsouth.net](mailto:greenvillelyme@bellsouth.net)

## Lyme Disease Support

### Illinois Lyme Disease Network

<http://www.illinoislyme.com>  
Contact: 618-204-8084

### New Mexico

Veronica Medina  
(505)459-9858  
[vrmedina@comcast.net](mailto:vrmedina@comcast.net)

### Oklahoma

Janet Segraves 405-359-9401  
[Janet@LDSG.org](mailto:Janet@LDSG.org)  
[www.LDSG.org](http://www.LDSG.org)

### Portland, Oregon

Meets 2nd Sunday of each month 2010 NW 22nd Street Second Floor from 1-3 PM.  
503-590-2528

### TEXAS :

**Greater Austin Area Lyme Council.** Teresa Jones  
[tmomintexas2@yahoo.com](mailto:tmomintexas2@yahoo.com)

### Dallas/Ft Worth

John Quinn  
[Jquinn@dart.org](mailto:Jquinn@dart.org)  
214-749-2845

### Houston

Contact: Teresa Lucher  
[lucher@sbcglobal.net](mailto:lucher@sbcglobal.net)

### League City/ ClearLake & NASA Area

Sandra Mannelli  
[smannelli@comcast.net](mailto:smannelli@comcast.net)

### Washington State

Alexis Benkowski  
WA-Lyme-owner@  
[yahogroups.com](mailto:yahogroups.com)

### Western Wisconsin Lyme Action Group

Marina Andrews  
715-857-5953



## Military Lyme Disease Support

Military Lyme Support is an online source of information and emotional support. This site is for Military Members, Veterans, and their family members who suffer from Lyme and other vector-borne diseases. Members are stationed in the United States and abroad.

<http://health.groups.yahoo.com/group/MilitaryLyme/>

## Texas Lyme Disease Association



[www.txlda.org](http://www.txlda.org)

All donations are tax exempt.  
Donate online with PayPal:  
[donations@txlda.org](mailto:donations@txlda.org)

# FINANCIAL ASSISTANCE AVAILABLE

## "CONDENSED" COWDEN SUPPORT PROGRAM

- 4 dosing times per day as opposed to 8 dosing times per day
- Cost is 40% less than the full support program
- More effective than the full support program

### FINANCIAL ASSISTANCE IS AVAILABLE FOR THE CONDENSED COWDEN SUPPORT PROGRAM FOR ONE PATIENT OF A PRACTITIONER

LIMITED AVAILABILITY – CONTACT US FOR MORE INFORMATION

**NutraMedix** 

Providing Quality Natural Products Since 1993

[info@nutramedix.com](mailto:info@nutramedix.com) • [www.nutramedix.com](http://www.nutramedix.com) • Tel: 1-800-730-3130 1-561-745-2917 • Fax: 1-561-745-3017



## Dallas - Fort Worth Lyme Support Group

Monthly Meetings:  
2nd Saturday each month 2-4 p.m.

**Harris Methodist Hospital- HEB**  
1600 Hospital Parkway  
Bedford, TX 76022-6913

We meet in the left wing when facing the front of the building.

Contact our group leaders for more information:

Rick Houle, email: [Pedler3710@aol.com](mailto:Pedler3710@aol.com)  
Home: 972.263.6158 or Cell: 214.957.7107

John Quinn  
[jquinn@dart.org](mailto:jquinn@dart.org)

## Southern California Lyme Support

Serving Los Angeles & Orange County areas

Contact: **Earis Corman**

13904 F Rio Hondo Circle  
La Miranda, CA 90638-3224

**562. 947. 6123**

**[eariscorman@aol.com](mailto:eariscorman@aol.com)**

# Discover The Top 10 Lyme Disease Treatments

**[www.Lyme-Disease-Treatment.com](http://www.Lyme-Disease-Treatment.com)**

## "Great Imitator" ... cont'd from pg 7

Immunology 6, 699-704  
(September 2006) |  
doi:10.1038/nri1920

[4][Figure 1] Annane D., Bellissant E., Cavaillon J-M. Septic Shock, The Lancet, 2005, 365, 63

[5] Andrea L. F. Bernardino,1 Tereance A. Myers,1 Xavier Alvarez,2 Atsuhiko Hasegawa,3 and Mario T. Philipp1, Toll-Like Receptors: Insights into Their Possible Role in the Pathogenesis of Lyme Neuroborreliosis", Infection and Immunity, October 2008, p. 4385-4395, Vol. 76, No. 10 0019-9567/08/\$08.00+0 doi:10.1128/IAI.00394-08

[6][http://articles.courant.com/20070824/news/0708240090\\_1\\_lyme-disease-durland-fish-chronic/2](http://articles.courant.com/20070824/news/0708240090_1_lyme-disease-durland-fish-chronic/2)

[7]<http://www.cbsnews.com/stories/2003/06/26/eveningnews/main560528.shtml>

[8] <http://www.nytimes.com/1999/05/04/health/scientist-at-work-allen-c-steere-lyme-expert-developed-big-picture-of-tiny-tick.html>

[9] Duray, Paul, "Clinical Pathologic Correlations of Lyme Disease", Journal of Infectious Diseases VOL. 11, SUPPLEMENT 6, September-October 1989 [http://www.lymecryme.com/Duray\\_1989.pdf](http://www.lymecryme.com/Duray_1989.pdf)

[10] Dickson, KD. "Scientific Validity". [http://www.actionlyme.org/SV\\_PPT\\_2\\_files/frame.htm](http://www.actionlyme.org/SV_PPT_2_files/frame.htm)

[11] Michaela Mann. "Untangling the structure of Lyme disease." Department of Energy's National Synchrotron Light Source at Brookhaven National Laboratory. [http://web.archive.org/web/20020531061819/www.pnl.gov/ene\\_rgyscience/06-01/art1.htm](http://web.archive.org/web/20020531061819/www.pnl.gov/ene_rgyscience/06-01/art1.htm)

[12] Brandt ME, Riley BS, Radolf JD, Norgard MV. "Immunogenic integral membrane proteins of Borrelia burgdorferi are lipoproteins." Infect Immun. 1990 Apr;58(4):983-91. PMID #10559223

[13] Hirschfeld M, Kirschning CJ, Schwandner R, Wesche H, Weis JH, Wooten RM, Weis JJ. "Cutting edge: inflammatory signaling by Borrelia burgdorferi lipoproteins is mediated by toll-like receptor 2" J Immunol. 1999 Sep 1;163(5):2382-6. PubMed ID #10452971

[14] Schröder NW, Heine H, Alexander C, Manukyan M, Eckert J, Hamann L, Göbel UB, Schumann RR. "Lipopolysaccharide binding protein binds to triacylated and diacylated lipopeptides and mediates innate immune responses." J Immunol. 2004 Aug 15;173(4):2683-91.

PubMed ID #15294986

[15] Wiesmüller KH, Bessler W, Jung G. "Synthesis of the mitogenic S-[2,3-bis(palmitoyloxy)propyl]-N-palmitoylpentapeptide from Escherichia coli lipoprotein." Hoppe Seyler's Z. Physiol Chem. 1983 May; 364(5):593-606. PMID: 6347861 [PubMed - indexed for MEDLINE]

[16] [http://www.biochem.duke.edu/modules/biochem\\_people/index.php?id=2](http://www.biochem.duke.edu/modules/biochem_people/index.php?id=2)

[17] Böltz T, Hummel RP, Tröger W, Rübsamen-Waigmann H, Biesert L, Müller-Lantzsch N, Koch P, Bessler W, Jung G. "Distinction between HIV-1 and HIV-2 infection using novel synthetic lipopeptide conjugates as antigens in enzyme immunoassays." Int J Pept Protein Res. 1992 Sep-Oct;40(3-4):214-21. PMID

[18] Defoort JP, Nardelli B, Huang W, Tam JP. "A rational design of synthetic peptide vaccine with a built-in adjuvant. A modular approach for unambiguity." Int J Pept Protein Res. J Virol Methods. 1988 Dec;22(2-3):173-82. PMID: 2464607

[19] Johnston MI, Fauci AS. "An HIV vaccine--challenges and prospects." N Engl J Med. 2008 Aug 28;359(9):888-90.

[20] Norgard MV, Riley BS,

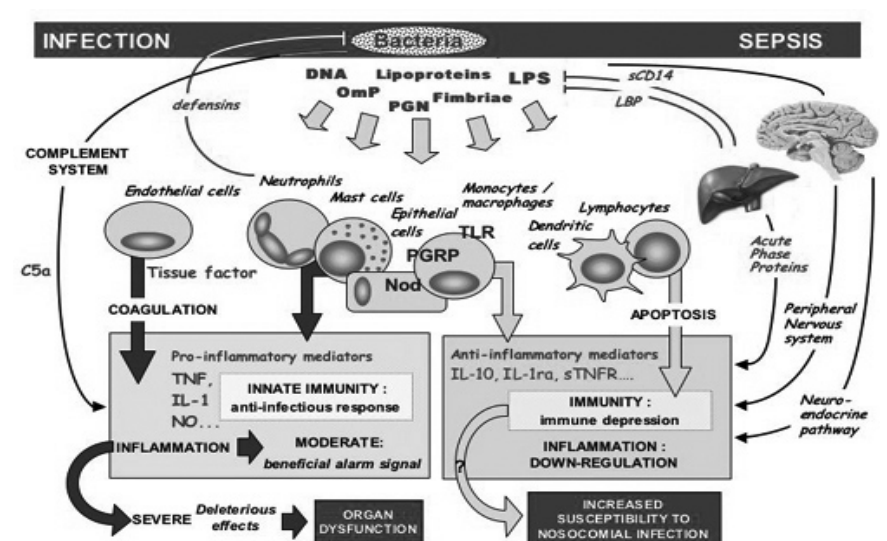


Fig 1 (above) Courtesy of Annane D., Bellissant E., Cavaillon J-M. Septic Shock, The Lancet, 2005, 365, 63

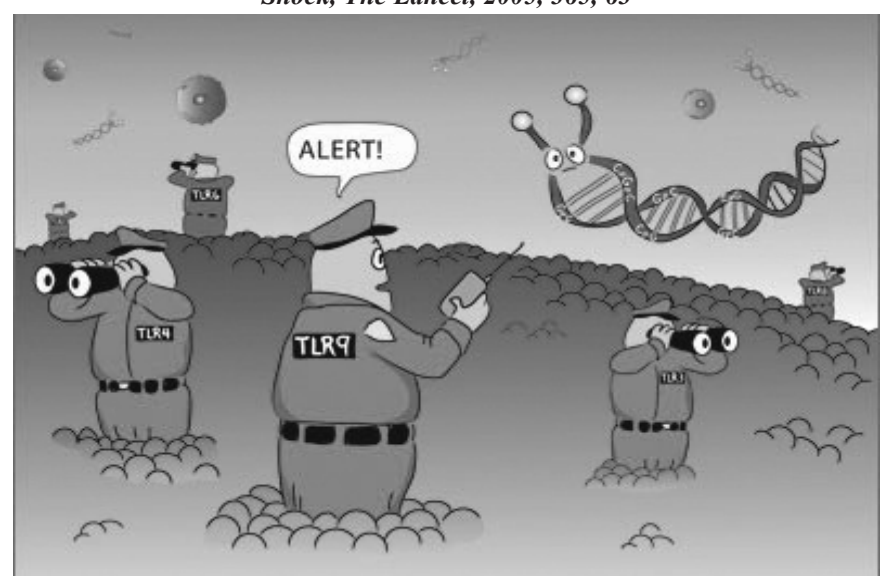


Fig 2: TLR's are like the "sentinels" of the cell. Figure 2 - Courtesy of [www.invivogen.com](http://www.invivogen.com)

Richardson JA, Radolf JD. "Dermal inflammation elicited by synthetic analogs of Treponema pallidum and Borrelia burgdorferi lipoproteins." Infect Immun. 1995 Apr;63(4):1507-15.

[21] Dressler F, Ackermann R, Steere AC. "Antibody responses to the three genomic groups of Borrelia burgdorferi in

European Lyme borreliosis." J Infect Dis. 1994 Feb;169(2):313-8.

[22] MMWR Weekly, "Notice to Readers Recommendations for Test Performance and Interpretation from the Second National Conference on Serologic Diagnosis of Lyme Disease" August 11, 1995 / 44(31): 590-591

# SoulCare Counseling Center

405 Harwood Road, Bedford, Texas 76022

Has your chronic illness  
made your life unmanageable?

Do you feel out of control?

*There is hope...*

DAWN IRONS

Graduate Associate Intern

Individuals, Couples, Families

Relationship Problems, Communication Difficulties, Unresolved Conflict,  
Trauma-Related Issues, Depression, Anger, Anxiety, Grief,  
& Chronic Illness

dawn@soulcarecounselingdfw.com

Call 972.804.2876 for appointments



## “Samento & Banderol”...cont’d from pg. 5

McGeer PL. Persisting atypical and cystic forms of *Borrelia burgdorferi* and local inflammation in Lyme neuroborreliosis. *J Neuroinflammation*. 2008;25:5-40.

4. Brorson Ø, Brorson SH, Scythes J, MacAllister J, Wier A, Margulis L. Destruction of spirochete *Borrelia burgdorferi* round-body propagules (RBs) by the antibiotic tigecycline. *Proc Natl Acad Sci U S A*. 2009 Nov;106(44):18656-18661.

5. Burrascano J. Advanced topics in Lyme disease. In: *Managing Lyme Disease*. 15th ed. 2005:1-33.

6. Krause PJ, Foley DT, Burke GS, Christianson D,

Closter L, Spielman A. Reinfection and relapse in early Lyme disease. *Am Trop Med Hyg*. 2006;75(6):1090-1094.

7. Klempner M, Linden MD, Hu T, J Evans J, et al. Two controlled trials of antibiotic treatment in patients with persistent symptoms and a history of Lyme disease. *N Engl J Med*. 2001;345:85-92.

8. Horowitz R. Classical and integrative medical approaches in chronic Lyme disease: new paradigms in diagnosis & treatment. 8th Annual International Lyme and Associated Diseases Society (ILADS) Conference; 2007 October.

9. Matsuura T, Shimizu

Y, Fujimoto H, et al. Minocycline-related lupus. *Lancet*.1992;340:1553.

10. Ccahuana-Vasquez RA, Santos SS, Koga-Ito CY, Jorge AO. Antimicrobial activity of *Uncaria tomentosa* against oral human pathogens. *Braz Oral Res*. 2007 Jan-Mar;21(1):46-50.

11. Valerio LG Jr, Gonzales GF. Toxicological aspects of the South American herbs cat's claw (*Uncaria tomentosa*) and Maca (*Lepidium meyenii*): a critical synopsis. *Toxicol Rev*. 2005;24(1):11-35.

12. Weniger B, Robledo S, Arango GJ, et al. Antiprotozoal activities of

Colombian plants. *J Ethnopharmacol*. 2001 Dec;78(2-3):193-200.

13. Baradaran-Dilmaghani R, Stanek G. In vitro susceptibility of thirty *Borrelia* strains from various sources against eight antimicrobial chemotherapeutics. *Infection*. 1996 Jan-Feb; 24(1):60-63.

14. Bockenstedt LK, Mao J, Hodzic E, et al. Detection of attenuated, noninfectious spirochetes in *Borrelia burgdorferi*-infected mice after antibiotic treatment. *J Infect Dis*. 2002; 186:1430-1437.

15. Barthold SW, Hodzic E, Imai DM, Feng S, Yang X, Luft BJ.

Ineffectiveness of tigecycline against persistent *Borrelia burgdorferi*. *Antimicrob Agents Chemother*. 2010 Feb;54(2):643-651.

16. Samuels DS and Radolf JD. *Borrelia: Molecular Biology, Host Interaction and Pathogenesis*. Caister Academic Press; 2010. 17. Reinhard K-H. *Uncaria tomentosa* (Willd.) D.C.: Cat's claw, Una de Gato, or Saventaro. *J Alt Comp Med*. 1999;5:143-151.

Previously published in the *Townsend Letter* July 2010

pha

# ENERGY • DETOX • COGNITION



Optimized Energy for Serious Mitochondrial Needs

## COMPLETE MITOCHONDRIAL SUPPORT

**ATP Fuel™** - the key to cellular energy production. It contains the essential researched nutrients for healthy mitochondrial function:

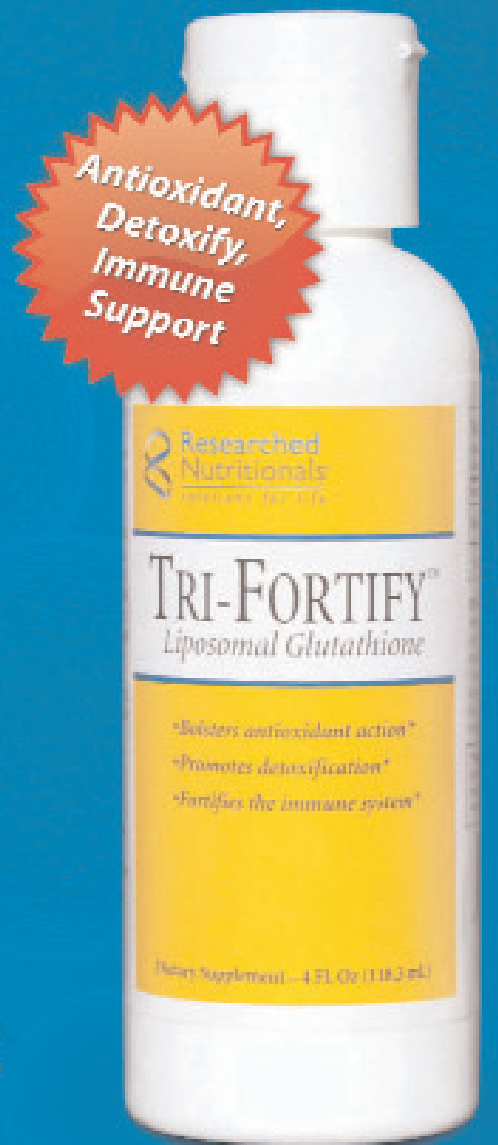
- NT Factor Energy™ to improve mitochondrial membrane function
- CoQ10 for ATP energy production
- NADH to convert food into cellular energy

Your patients get performance and convenience in one formula.

## LIPOSOMAL GLUTATHIONE

**Tri-Fortify™** provides the preferred reduced L-glutathione, the major intracellular antioxidant essential for detoxification in the body, in an absorbable liposomal delivery system. The unique liposome structure, developed as a pharmaceutical delivery system, allows it to combine effectively with the body's natural fluids and penetrate its protective membranes, bypassing the digestive system and directly entering the blood stream. Tri-Fortify™ promotes:

- Detoxification
- Healthy immune response
- Antioxidant protection



Antioxidant, Detoxify, Immune Support



Mental Acuity & Focus

## COGNITIVE PERFORMANCE

**CogniCare™** meets the needs of many patients requiring a well balanced cognitive support formula. Combining eight nutrients at research strength, each capsule of CogniCare™ includes:

- Neurotransmitter modulation and optimization
- Ultimate Focus Complex™ to nurture memory & brain function
- ProAcuity Mood Complex™ to promote healthy mood function

NEW PRODUCTS

*"ATP Fuel™ contains the top three ingredients clinicians know to be the most helpful for their patients with fatigue.*

*We all know the essential role of supplemental glutathione, and now it can be delivered orally!*

*I found CogniCare™ to be beneficial for many of my patients, of all ages, who have cognitive issues."*

*Joseph J. Burrascano Jr. M.D.*



Toll Free: 800.755.3402 • Tel: 805.693.1802 • Fax: 805.693.1806  
 www.ResearchedNutritionals.com | Available only through healthcare professionals

\* These statements have not been evaluated by the Food and Drug Administration. This product is not intended to diagnose, treat, cure or prevent any disease.

## “CONDENSED” COWDEN SUPPORT PROGRAM



**FINANCIAL ASSISTANCE IS AVAILABLE  
FOR THE CONDENSED COWDEN SUPPORT PROGRAM  
FOR ONE PATIENT OF A PRACTITIONER**  
LIMITED AVAILABILITY – CONTACT US FOR MORE INFORMATION

### ABOUT THE COMPANY

NutraMedix was founded in 1993 and currently has facilities in Jupiter, Florida, USA and in Shannon, Ireland supplying highly bio-active nutritional supplements to health care professionals and consumers.

From the beginning, NutraMedix has operated with a unique business model. First, the owners and management work diligently to operate a company according to Biblical principles— with honesty, integrity, value and respect for all people. Its corporate environment is one that works to serve both its customers and its employees, producing one of the best customer service teams in the industry. Second, NutraMedix was founded with the goal of using a significant amount of its proceeds to support orphans, widows, Christian pastors and missionaries in economically distressed parts of the world. So as a customer, you are not just purchasing high quality nutritional supplements, you are helping us give back to people in need all around the globe.



### ABOUT THE PRODUCTS

NutraMedix has made a significant investment to develop a novel, proprietary extraction and enhancement process used to manufacture its liquid extracts. The result is a highly bio-available whole plant, broad-spectrum extract that is also very cost effective. We were the first to introduce Samento, a rare chemo-type of Cat's Claw, which has remained one of our signature products. We have since developed a full line of liquid extracts utilizing the same proprietary extraction and enhancement process.

NutraMedix also conducts extensive research to procure the very highest quality raw materials for its powdered capsule products, many of which have been designed to enhance the effectiveness of the liquid extracts. We are committed expanding our line of natural products meeting the highest expectations of health care professionals and consumers.



### ABOUT THE FOUNDATION

The owners of NutraMedix have been involved in international Christian ministry since the 1980s. Prior to starting the company in 1993, our Founder and President was a missionary pilot serving tribal groups in Peru. The Kairos Foundation was created in 1995 to fund projects that address both the physical and spiritual needs of people in some of the most disadvantaged areas of the world. The foundation provides ongoing financial support for organizations operating in Africa, Asia, Eastern Europe, North America and South America.



**NutraMedix** 

Providing Quality Natural Products Since 1993

info@nutramedix.com • www.nutramedix.com

Tel: 800-730-3130 561-745-2917 • Fax: 561-745-3017

